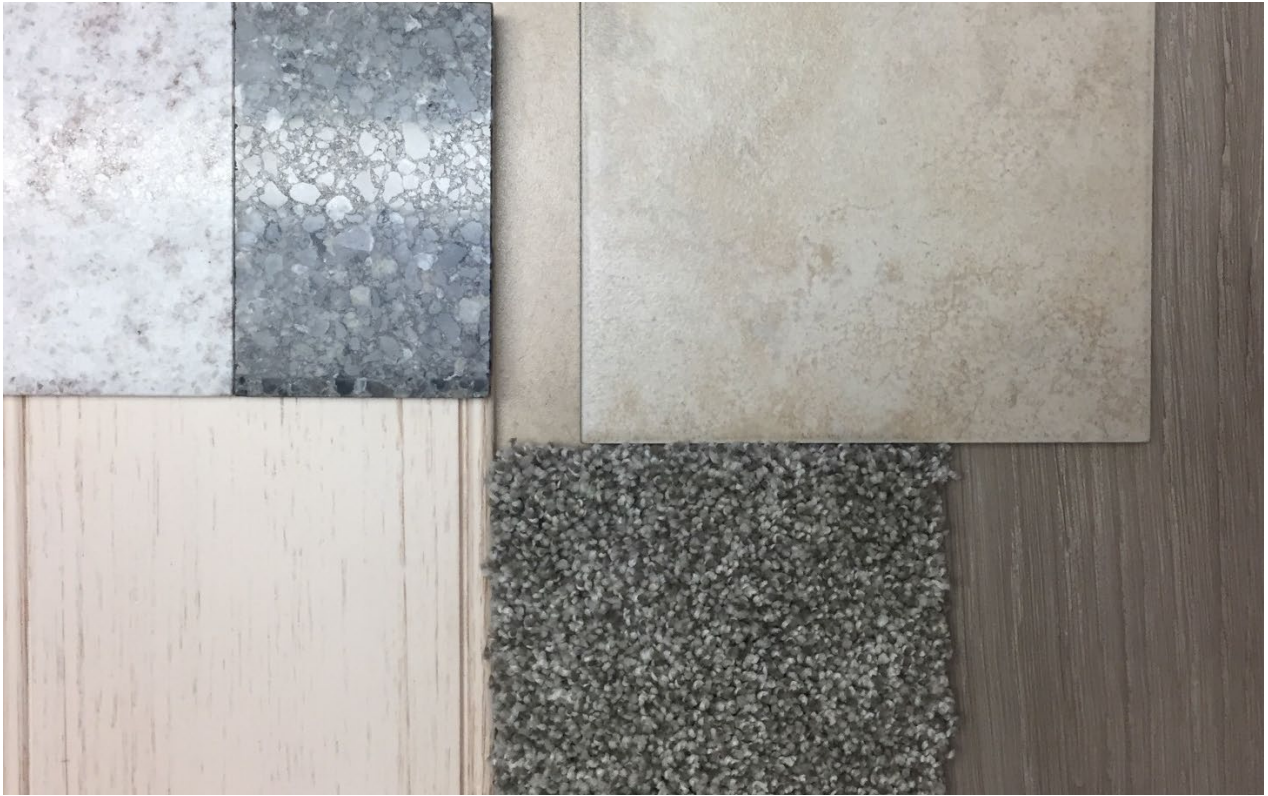

SMITH FAMILY FINANCIAL RESIDENCE FINISH BOOK



ERIN DUNN

INTR 20200

BRENDA MORROW

16 DECEMBER 2019

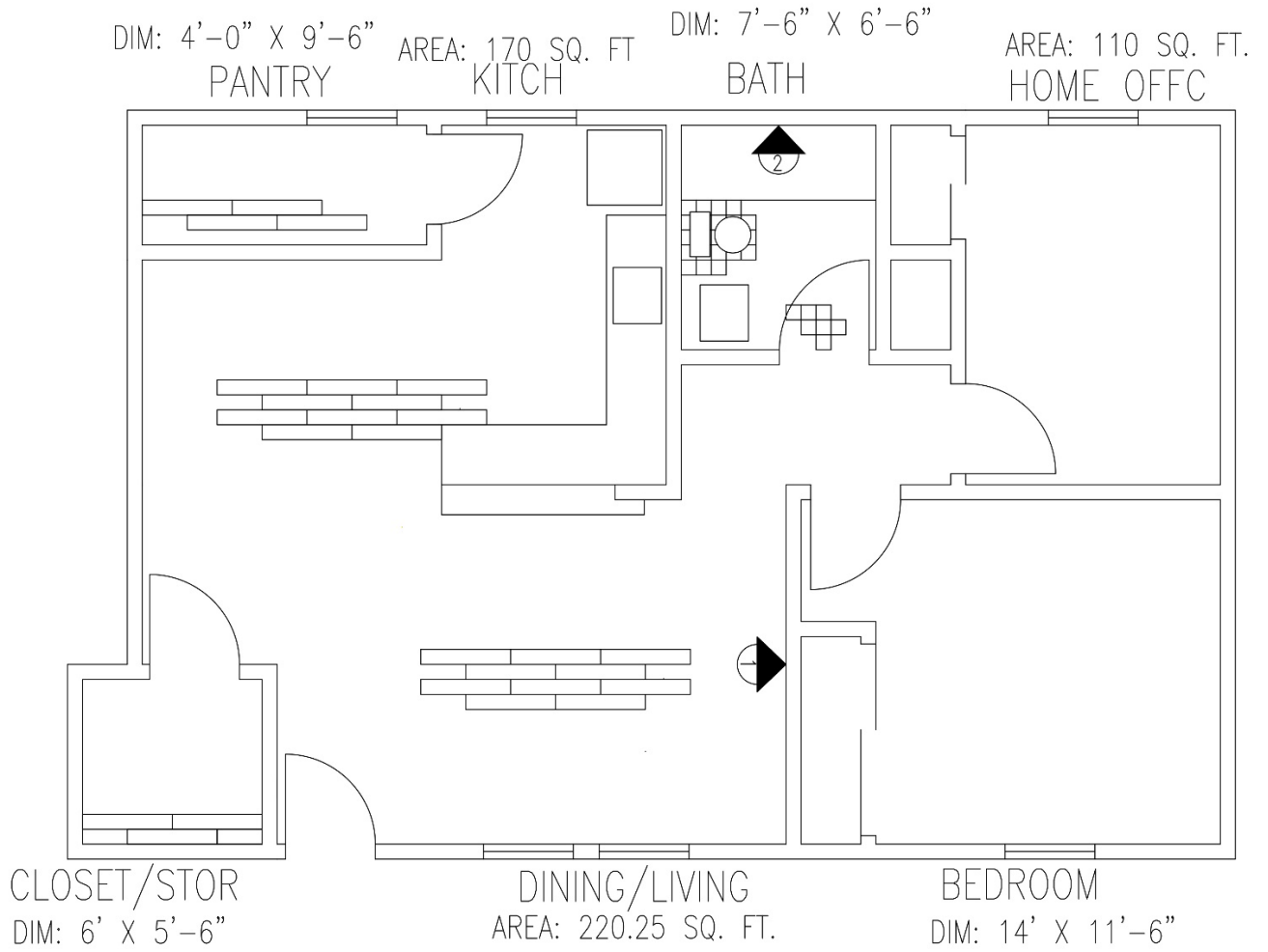
Table of Contents

Title Page.....	1
Table of Contents.....	2
Criteria Statement	3
Floor Plan with Finishes	4
Elevations with Finishes.....	5
Finish Samples.....	6
Floor Samples	6
Wall Samples	9
Ceiling Sample	16
Cabinet Paint Samples	17
Cabinet Countertop Samples	19
Finish Schedule	21
Finish Schedule Abbreviations	22
Quantity Estimates	23
Sources	29
Actual Samples	30

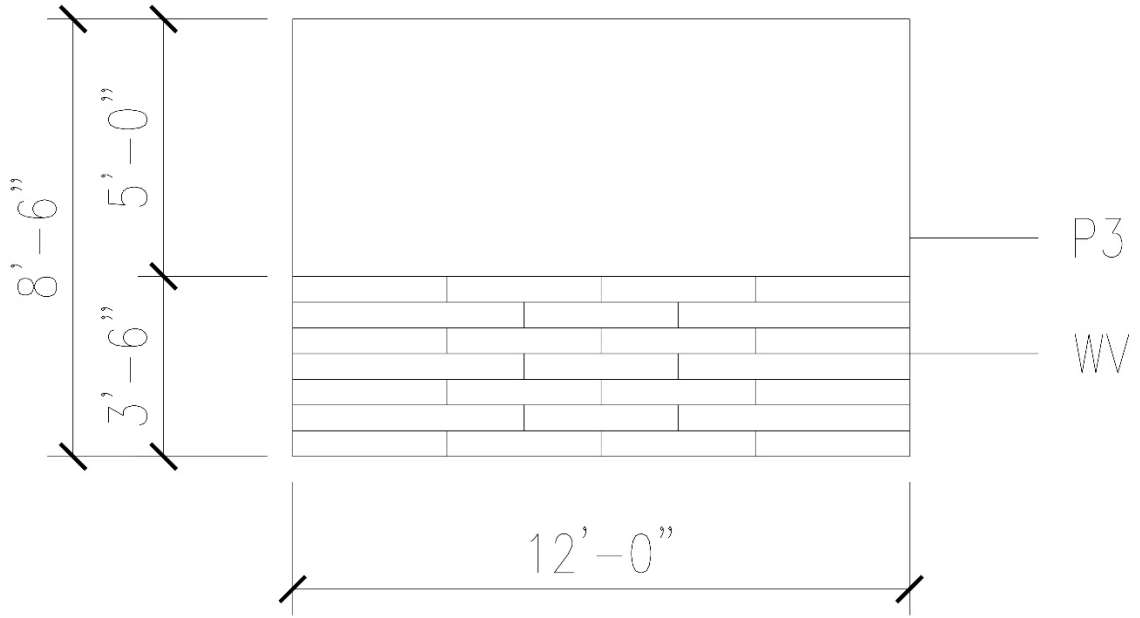
DESIGN CRITERIA STATEMENT

Based on the meetings with the Smith family, a green sustainable environment is desired, but not exclusive to just that. A member of the family is allergic to formaldehyde, so with this in mind avoid products containing this chemical. There is a preference for a strong but yet neutral backdrop for the furnishings, but do not mind having colorful accents strategically placed. The residence is not used that often due to the family traveling the world a lot.

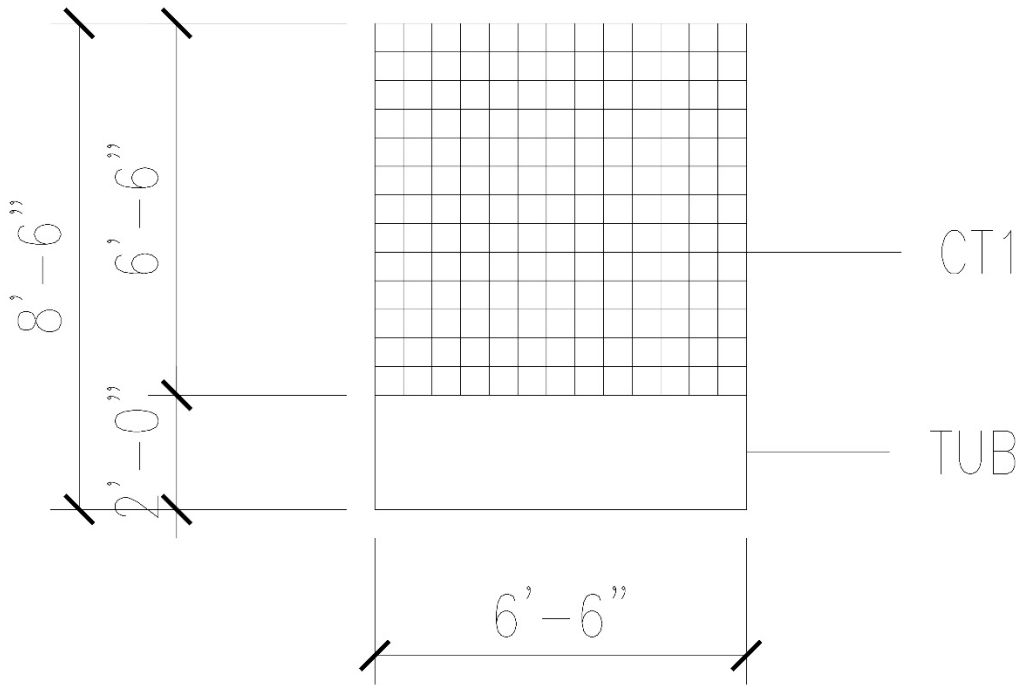
Finish Plan



Finish Elevations




▲ EAST WALL OF LIVING ROOM
① ELEVATION 1



 EAST WALL OF BATHROOM
ELEVATION 2


Finish Samples

Floor Samples

Description	
CPT1	<p>Product Information:</p> <p>Type: Carpet</p> <p>Style: EA586 LASTING IMPRESSIONS (A)</p> <p>Color: 00154 ADVANTAGEOUS</p> <p>Characteristics:</p> <p>Fiber: 100% ANSO CRUSHRESISTER BCF NYLON</p> <p>Fiber Brand: ANSO CRUSH RESISTER NYLON W/R2X</p> <p>Width: 12 ft</p> <p>Backing: Lifeguard</p> <p>Durability: N/A</p>
	<p>Manufacturer Information:</p> <p>Name: Shaw Floors</p> <p>Address: 616 E Walnut Ave, Dalton, GA 30722</p> <p>Phone: (706) 278-3812</p>
Sample	Rationale
	<p>The carpet is meant for residential spaces. It does not contain any formaldehyde in it. It has a neutral tone to it. The padding on the back can act as a sound reducer.</p>

Finish Samples

Floor Samples

Description	
VCT1	<p>Product Information:</p> <p>SKU: NVH-2701 Type: VCT (Plank) Color: River Birch Size: 6"x36" Thickness: 3MM</p> <p>Manufacturer Information:</p> <p>Name: TAJ Flooring Address: 740 Church Rd, Elgin, IL 60123 Phone: (847) 690-9930</p> <p>Characteristics:</p> <p>Classification: ASTM F1700 Class III, Type A (Smooth) Type B (Embossed) Overall Thickness: 3.0mm, .118", Nominal 1/8" Wear Layer Thickness: 0.5mm, 20mil Wear Layer: High Molecular Weight Polymerized Vinyl Finish: Protech UV Cured Polyurethane Edge Detail: Square Edge (no bevel) Warranty: 15 Year Commercial Warranty Maintenance: Requires no wax, no stripping, no buffing or the use of toxic chemicals Static Load Limit: ASTM F970 modified, passes at 1,100 psi, residual compression maximum 0.005" Chemical and Stain Resistance: ASTM F925, No surface dulling, surface attack or color change with 5% acetic acid, 70% isopropyl alcohol, mineral spirits, 5% sodium hydroxide, 5% hydrochloric acid, 5% ammonia, bleach, 5% phenol, gasoline, sulfuric acid, kerosene, and olive oil. Slip Resistance: ASTM C1028-89, >0.6 Flame Spread: ASTM E648, >.45, Class 1 Smoke Density: ASTM E662, <450 Low Emitting Flooring: LEED IEQ4.3 Low Emitting Adhesives: LEED IEQ4.1 Recycled Content: Post Consumer and Post Industrial Recycled Content Present* Indoor Air Quality: CHPS 1350 Certified Indoor Air Quality: FloorScore Certified Plant Certifications: ISO14001, ISO9001 Trade Agreements Act (TAA) Compliant</p>
Sample	Rationale
	The luxury vinyl tile is meant for commercial space. Has a low VOC and does not contain any formaldehyde in the tile itself and the glue that is used to glue it down. It has a 15 year warranty. The LVT is also 100% recyclable. It has a neutral color.

Finish Samples

Floor Samples

Description	
CT1	<p>Product Information:</p> <p>Type: Porcelain Tile</p> <p>Size: 6" x 6"</p> <p>Shade Variation: V2</p> <p>Finish: Glazed</p> <p>Warranty: N/A</p> <p>Manufacturer Information:</p> <p>Name: Lowe's</p> <p>Address: 1000 Lowe's Boulevard, Mooresville, NC 28117</p> <p>Phone: (800) 445-6937</p>
Sample	Rationale
	<p>The porcelain tile is meant for residential and commercial spaces. The sizes vary in three different sizes but will be only using one size. Can be used for bathroom walls/floors, kitchen backsplash, fireplace exteriors, and shower walls. Can be used indoors or outdoors. It is frost resistant. It has a neutral color.</p>


Finish Samples

Wall Samples

Description	
PR1	<p>Product Information:</p> <p>Product #: B51W00150</p> <p>Sales #: 650896616</p> <p>Product Name: Extreme Bond Primer</p> <p>Container Size: 1 gal</p> <p>Base: White</p> <p>Manufacturer Information:</p> <p>Name: Sherwin Williams</p> <p>Address: 101 W Prospect Ave, Cleveland, OH 44115</p> <p>Phone: 1-800-474-3794</p>
Sample	Rationale
	<p>This primer is meant for both residential and commercial spaces. It is durable, it has low VOC, and it has good coverage.</p>

Finish Samples

Wall Samples

Description	
CT1	<p>Product Information: Type: Porcelain Tile Size: 6" x 6" Shade Variation: V2 Finish: Glazed Warranty: N/A</p> <p>Manufacturer Information: Name: Lowe's Address: 1000 Lowe's Boulevard, Mooreville, NC 28117 Phone: (800) 445-6937</p>
Sample	Rationale
	<p>The porcelain tile is meant for residential and commercial spaces. The sizes vary in three different sizes but will be only using one size. Can be used for bathroom walls/floors, kitchen backsplash, fireplace exteriors, and shower walls. Can be used indoors or outdoors. It is frost resistant. It has a neutral color.</p>


Finish Samples

Wall Samples

Description	
WB/P1	<p>Product Information: Information: Color Name/#: Shell Tint/0023 Product Code: 700355463627 3586 Sheen: Semi-gloss Container Size: 1 gal Coverage: 500 sq. ft.</p> <p style="text-align: right;">Manufacturer Name: Ecos Paints Phone: 866-587-</p>
Sample	Rationale
 <p>023 Shell Tint</p>	<p>This paint is mean for both residential and commercial. It has a neutral color. It is durable, it has 0 VOCs, and it has really good coverage. 1 gallon can cover 500 sq. ft. of space. A semi-gloss finish was chosen for the wall trim, which means that it needs cleaned more often. The paint is also good for the indoor air quality since it has zero VOCs.</p>


Finish Samples

Wall Samples

Description	
P2	<p>Product Information: Color Name/#: White/0000 Product Code: 700355463627 Sheen: Eggshell Container Size: 1 gal Coverage: 500 sq. ft.</p> <p>Manufacturer Information: Name: Ecos Paints Phone: 866-587-3586</p>
Sample	Rationale
	<p>This paint is mean for both residential and commercial. It has a neutral color. It is durable, it has 0 VOCs, and it has really good coverage. 1 gallon can cover 500 sq. ft. of space. An eggshell finish was chosen for most of the walls, which means that it does not need to be cleaned that often. But that being said, since the paint is still white it will still need to be cleaned. The paint is also good for the indoor air quality since it has zero VOCs.</p>

Finish Samples

Wall Samples

Description	
P3	<p>Product Information: Color Name/#: Charybdis/0661 Product Code: 700355463627 Sheen: Eggshell Container Size: 1 gal Coverage: 500 sq. ft.</p> <p>Manufacturer Information: Name: Ecos Paints Phone: 866-587-3586</p>
Sample	Rationale
	<p>This paint is mean for both residential and commercial. It has a neutral color. It is durable, it has 0 VOCs, and it has really good coverage. 1 gallon can cover 500 sq. ft. of space. An eggshell finish was chosen for the east wall in the living room, which means that it does not need to be cleaned that often. The blue accents the wood veneer really well. The paint is also good for the indoor air quality since it has zero VOCs.</p>


Finish Samples

Wall Samples

Description	
P4	<p>Product Information: Color Name/#: Tropical Heat/1082 Product Code: 700355463627 Sheen: Eggshell Container Size: 1 quart</p> <p>Manufacturer Information: Name: Ecos Paints Phone: 866-587-3586</p>
Sample	Rationale
	<p>This paint is mean for both residential and commercial. It has a neutral color. It is durable, it has 0 VOCs, and it has really good coverage. Using 1 quart of paint instead of a 1 gallon due to it being one wall painted this color. An eggshell finish was chosen for the east wall in the bathroom, which means that it does not need to be cleaned that often. But that being said, since the paint is still white it will still need to be cleaned. The paint is also good for the indoor air quality since it has zero VOCs.</p>



Finish Samples

Wall Samples

Description		
WV	Product Information: Type: Formwood 2-Ply Hardwood Veneer Species: Aceraceae Thickness: 0.035" Size: 6" x 3'-0", 6" x 4'-6"	Manufacturer Information: Name: Formwood Address: 1601 Production Dr, Jeffersonville, IN 47130 Phone: (812) 590-8656
Sample	Rationale	
	This wood veneer is meant for residential and commercial. It is strong and durable. It goes well with the blue accent paint on the east wall of the living room.	


Finish Samples

Ceiling Sample

Description	
GBP1	<p>Product Information: Color Name/#: Shell Tint/0023 Product Code: 700355463627 Sheen: Eggshell Container Size: 1 gal Coverage: 500 sq. ft.</p> <p>Manufacturer Information: Name: Ecos Paints Phone: 866-587-3586</p>
Sample	Rationale
 <p>023 Shell Tint</p> 	<p>This paint is mean for both residential and commercial. It has a neutral color. It is durable, it has 0 VOCs, and it has really good coverage. 1 gallon can cover 500 sq. ft. of space. An eggshell finish was chosen for the ceilings, which means that it needs cleaned more often. The paint is also good for the indoor air quality since it has zero VOCs.</p>


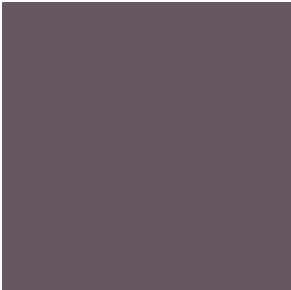
Finish Samples

Cabinet Paint Samples

Description			
P5	<table border="0" style="width: 100%;"> <tr> <td style="width: 50%; vertical-align: top;"> Product Information: Color Name/#: Ultra-Pure White/PR-W15 Sheen: Eggshell Container Size: 1 gal Coverage: 200-400 Sq. ft. </td> <td style="width: 50%; vertical-align: top;"> Manufacturer Information: Name: Behr Address: 3400 W Segerstrom Ave, Santa Ana, CA 92704 Phone: (714) 545-7101 </td> </tr> </table>	Product Information: Color Name/#: Ultra-Pure White/PR-W15 Sheen: Eggshell Container Size: 1 gal Coverage: 200-400 Sq. ft.	Manufacturer Information: Name: Behr Address: 3400 W Segerstrom Ave, Santa Ana, CA 92704 Phone: (714) 545-7101
Product Information: Color Name/#: Ultra-Pure White/PR-W15 Sheen: Eggshell Container Size: 1 gal Coverage: 200-400 Sq. ft.	Manufacturer Information: Name: Behr Address: 3400 W Segerstrom Ave, Santa Ana, CA 92704 Phone: (714) 545-7101		
Sample	Rationale		
	<p>This paint is mean for both residential. It has a neutral color. It is durable, it has 0 VOCs, and it has good coverage. 1 gallon can cover 250-400 sq. ft. of space. An eggshell finish was chosen for the cabinets in the kitchen, which means that it needs cleaned more often. The paint is also good for the indoor air quality since it has zero VOCs.</p>		


Finish Samples

Cabinet Paint Samples

Description			
P6	<table style="width: 100%; border: none;"> <tr> <td style="width: 50%; border: none; vertical-align: top;"> Product Information: Color Name/#: Urban Legend/N100-6 Sheen: Eggshell Container Size: 1 gal Coverage: 200-400 Sq. ft. </td> <td style="width: 50%; border: none; vertical-align: top;"> Manufacturer Information: Name: Behr Address: 3400 W Segerstrom Ave, Santa Ana, CA 92704 Phone: (714) 545-7101 </td> </tr> </table>	Product Information: Color Name/#: Urban Legend/N100-6 Sheen: Eggshell Container Size: 1 gal Coverage: 200-400 Sq. ft.	Manufacturer Information: Name: Behr Address: 3400 W Segerstrom Ave, Santa Ana, CA 92704 Phone: (714) 545-7101
Product Information: Color Name/#: Urban Legend/N100-6 Sheen: Eggshell Container Size: 1 gal Coverage: 200-400 Sq. ft.	Manufacturer Information: Name: Behr Address: 3400 W Segerstrom Ave, Santa Ana, CA 92704 Phone: (714) 545-7101		
Sample	Rationale		
 	<p>This paint is mean for both residential. It has a neutral color. It is durable, it has 0 VOCs, and it has good coverage. 1 gallon can cover 250-400 sq. ft. of space. An eggshell finish was chosen for the cabinets in the bathroom, which means that it needs cleaned more often. The paint is also good for the indoor air quality since it has zero VOCs.</p>		

Finish Samples

Cabinet Countertop Samples

Description	
Q1	<p>Product Information:</p> <p>Name/#: Indian Pearl/MV607</p> <p>Pattern: Textured/Veined</p> <p>Finish: Polished</p> <p>Type: Quartz</p> <p>Slab Size: 65" x 130"</p> <p>Manufacturer Information:</p> <p>Name: HanStone Quartz</p> <p>Phone: 1-888-426-9421</p>
Sample	Rationale
	<p>This countertop is meant for residential spaces. It has a neutral tone to it. It comes in a 65" x 130" slab. It goes well with the cabinet paint for the bathroom.</p>

Finish Samples

Cabinet Countertop Samples

Description	
Q2	<p>Product Information:</p> <p>Name/#: Blackburn/RS401</p> <p>Pattern: Textured</p> <p>Finish: Polished</p> <p>Type: Quartz</p> <p>Slab Size: 65" x 130"</p> <p>Manufacturer Information:</p> <p>Name: HanStone Quartz</p> <p>Phone: 1-888-426-9421</p>
Sample	Rationale
	<p>This countertop is meant for residential spaces. It has a neutral tone to it. It comes in a 65" x 130" slab. It goes well with the cabinet paint for the bathroom.</p>

Finish Schedule

Room Name	Base	Floor	Walls				Ceiling	Countertop/Cabinets	Remarks
			N	S	E	W			
Living Room/ Dining Room	WB/P1	VCT1	P2	P2	P3, WV	P2	GBP1		1, 2, 3
Storage Closet		VCT1	P2	P2	P2	P2	GBP1		1, 2
Kitchen	WB/P1	VCT1	P2	P2	P2	P2	GBP1	P5, Q2	1, 2, 5
Pantry		VCT1	P2	P2	P2	P2	GBP1		1, 2
Hallway	WB/P1	VCT1	P2	P2	P2	P2	GBP1		1, 2
Bathroom	WB/P1	CT1	CT1	P2	P4	P2	GBP1	P6, Q1	1, 2, 4, 6
Bedroom	WB/P1	CPT1	P2	P2	P2	P2	GBP1		1, 2
Bedroom Closet		CPT1	P2	P2	P2	P2	GBP1		1, 2
Home Office	WB/P1	CPT1	P2	P2	P2	P2	GBP1		1, 2
Home Office Closet		CPT1	P2	P2	P2	P2	GBP1		1, 2

Finish Schedule Abbreviations

Base

WB/P1 – Wood Base/Painted

WV – Wood Veneer

CT1 – Ceramic Tile

Flooring

CT1 – Ceramic Tile

CPT1 – Carpet

VCT1 – Vinyl Composition Tile

Cabinets

P5 – Ultra-Pure White Paint

P6 – Urban Legend Paint

Walls

P2 – White Paint

P3 – Charybdis Paint

P4 - Tropical Heat Paint

Countertop

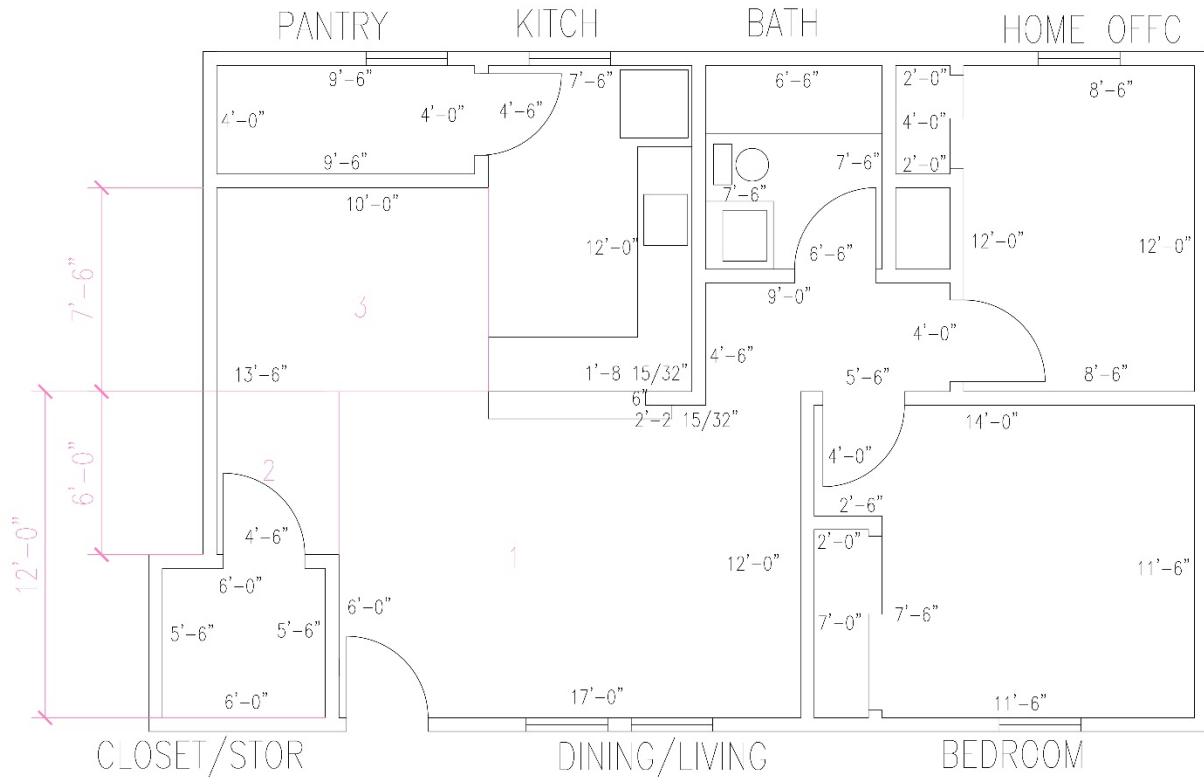
Q1 – Indian Pearl Quartz

Q2 – Blackburn Quartz

Ceiling

GBP1- Gypsum Board Painted

Estimations



Living Room/Dining Room

Flooring (1): $17' \div 3' = 5.67 = 6$ $12' \div 0'-6" = 24$

$6(3') \times 24(0'-6") = 216$ $216 \times 0.05 = 10.8 = 11$ $216 + 11 = 227$ [0.05 = 5%]

Flooring (2): $4'-6" \div 3' = 13.5 = 14$ $6' \div 0'-6" = 12$

$14(3') \times 12(.5) = 252$ $252 \times 0.05 = 12.6 = 13$ $252 + 13 = 285$ [0.05 = 5%]

Flooring (3): $10' \div 3' = 3.33 = 3$ $7'-6" \div 0'-6" = 15$

$3(3') \times 15(0'-6") = 67.5 = 68$ $68 \times 0.05 = 3.4 = 4$ $68 + 4 = 72$ [0.05 = 5%]

Total Flooring: $227 + 285 + 72 = 584$ VCTS

Primer: $17' + 12' + 6' + 4'-6" + 13'-6" + 10' + 2'-2 \frac{15}{32}" = 65'-2 \frac{15}{32}"$ lineal feet

$65'-2 \frac{15}{32}" \times 8'-6" = 554.2487$ sq. ft

P2: $17' + 6' + 4'-6'' + 13'-6'' + 10' + 2'-2 \frac{15}{32} = 53'-2 \frac{15}{32}''$ lineal feet

$53'-2 \frac{15}{32}'' \times 8'-6'' = 452.2487$ sq. ft. 452.2487 sq. ft. x 2 coats = **904.4974 sq. ft.**

P3: $12' = 12$ lineal feet

$12' \times 8'-6'' = 102$ sq. ft. 102 sq. ft. x 2 coats = **204 sq. ft.**

WV: $12' \times 3'-6'' =$ **42 sq. ft.**

GBP1: $17' \times 11' = 187$ sq. ft. $5' \times 4'-6'' = 22.5$ sq. ft. $10' \times 8'-6'' = 85$ sq. ft.

187 sq. ft. + 22.5 sq. ft. + 85 sq. ft. = 294.5 sq. ft. 294.5 sq. ft. x 2 coats = **589 sq. ft.**

Storage Closet

Flooring: $6' \div 3' = 2$ $5'-6'' \div 0'-6'' = 11$

$2(3') \times 11(0'-6'') = 33$ $33 \times 0.05 = 1.65 = 2$ $33 + 2 =$ **35 VCTs** [0.05 = 5%]

Primer: $6' + 6' + 5'-6'' + 5'-6'' = 23$ lineal feet $23' \times 8'-6'' =$ **195.5 sq. ft.**

P2: $6' + 6' + 5'-6'' + 5'-6'' = 23$ lineal feet

$23' \times 8'-6'' = 195.5$ sq. ft. 195.5 sq. ft x 2 coats = **391 sq. ft.**

GBP1: $6' \times 5'-6'' = 33$ sq. ft. 33 sq. ft. x 2 coats = **66 sq. ft.**

Kitchen

Flooring: $7'-6'' \div 3' = 2.5 = 3$ $12' \div 0'-6'' = 24$

$3(3') \times 24(0'-6'') = 108$ $108 \times 0.05 = 5.4 = 6$ $108 + 6 =$ **114 VCTs** [0.05 = 5%]

Primer: $0'-6'' + 4'-6'' + 7'-6'' + 12' + 1'-8 \frac{15}{32}'' = 26'-2 \frac{15}{32}''$ lineal feet

$26'-2 \frac{15}{32}'' \times 8'-6'' =$ **222.7487 sq. ft.**

P2: $0'-6'' + 4'-6'' + 7'-6'' + 12' + 1'-8 \frac{15}{32}'' = 26'-2 \frac{15}{32}''$ lineal feet

$26'-2 \frac{15}{32}'' \times 8'-6'' = 222.7487$ sq. ft. 222.7487 sq. ft. x 2 coats = **445.4974 sq. ft.**

GBP1: $12' \times 7'-6'' = 90$ sq. ft. 90 sq. ft. x 2 coats = **180 sq. ft.**

Pantry

Flooring: $9'-6'' \div 3' = 3.167 = 4$ $4' \div 0'-6'' = 8$

$4(3') \times 8(0'-6'') = 48$ $48 \times 0.05 = 2.4 = 3$ $48 + 3 = 51 \text{ VCTS}$ [0.05 = 5%]

Primer: $4' + 4' + 9'-6'' + 9'-6'' = 27$ lineal feet $27' \times 8'-6'' = 229.5 \text{ sq. ft.}$

P2: $4' + 4' + 9'-6'' + 9'-6'' = 27$ lineal feet

$27' \times 8'-6'' = 229.5 \text{ sq. ft.}$ $229.5 \text{ sq. ft.} \times 2 \text{ coats} = 459 \text{ sq. ft.}$

GBP1: $4' \times 9'-6'' = 38 \text{ sq. ft.}$ $38 \text{ sq. ft.} \times 2 \text{ coats} = 76 \text{ sq. ft.}$

Hallway

Flooring: $9' \div 3' = 3$ $4' \div 0'-6'' = 8$

$3(3') \times 8(0'-6'') = 36$ $36 \times 0.05 = 1.8 = 2$ $36 + 2 = 38 \text{ VCTS}$ [0.05 = 5%]

Primer: $4'-6'' + 9' + 4' + 5'-6'' = 23$ lineal feet $23' \times 8'-6'' = 195.5 \text{ sq. ft.}$

P2: $4'-6'' + 9' + 4' + 5'-6'' = 23$ lineal feet

$23' \times 8'-6'' = 195.5 \text{ sq. ft.}$ $195.5 \text{ sq. ft.} \times 2 \text{ coats} = 391 \text{ sq. ft.}$

GBP1: $4' \times 9' = 36 \text{ sq. ft.}$ $36 \text{ sq. ft.} \times 2 \text{ coats} = 72 \text{ sq. ft.}$

Bathroom

Flooring: $6'-6'' \div 0'-6'' = 13$ $7'-6'' \div 0'-6'' = 15$

$13(0'-6'') \times 15(0'-6'') = 48.75 = 49$ $49 \times 0.05 = 2.45 = 3$ $49 + 3 = 52 \text{ Ceramic Tiles}$

[0.05 = 5%]

Primer: $6'-6'' + 6'-6'' + 7'-6'' + 7'-6'' = 28$ lineal feet $28' \times 8'-6'' = 238 \text{ sq. ft.}$

CT1 (North Wall): $6'-6'' \div 0'-6'' = 13$ $6'-6'' \div 0'-6'' = 13$

$13(0'-6'') \times 13(0'-6'') = 42.25 = 43$ $43 \times 0.05 = 2.15 = 3$ $43 + 3 = 46 \text{ Ceramic Tiles}$

[0.05 = 5%]

P4 (East Wall): $7'-6'' = 7.5$ lineal feet $7'-6'' \times 8'-6'' = 63.75 \text{ sq. ft.}$ $63.75 \text{ sq. ft.} \times 2 \text{ coats} = 127.5 \text{ sq. ft.}$

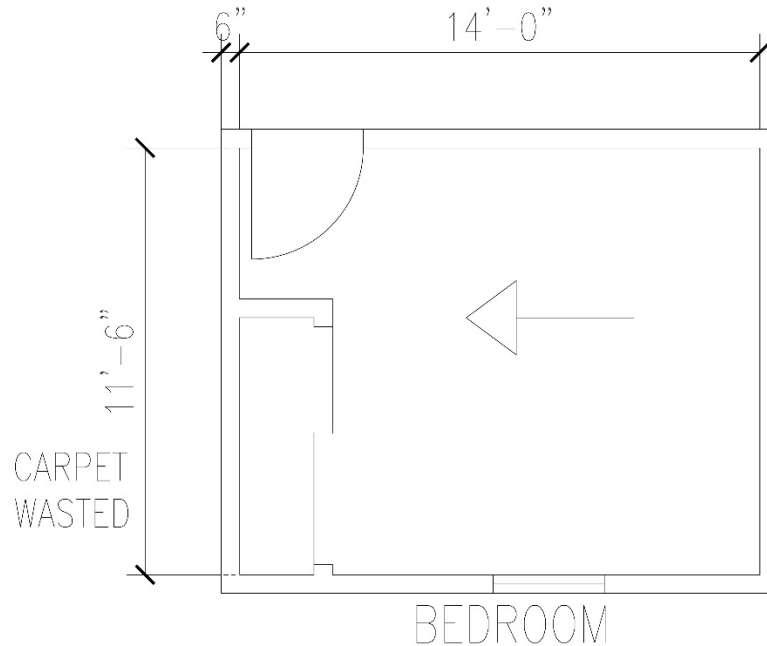
P2 (South and West Walls): $7'-6'' + 6'-6'' = 14$ lineal feet

$14' \times 8'-6'' = 119 \text{ sq. ft.}$ $119 \text{ sq. ft.} \times 2 \text{ coats} = 238 \text{ sq. ft.}$

$$\text{GBP1: } 6'-6'' \times 7'-6'' = 48.75 \text{ sq. ft.}$$

$$48.75 \text{ sq. ft.} \times 2 \text{ coats} = \underline{97.5 \text{ sq. ft.}}$$

Bedroom/Closet Flooring



$$14' \times 12' = \underline{168 \text{ sq. ft.}}$$

$$\text{Wasted: } (0'-6'' \times 11'-6'' = \underline{5'-8''})$$

Bedroom

$$\text{Primer: } 4' + 2'-6'' + 7'-6'' + 11'-6'' + 11'-6'' + 14' = 51 \text{ lineal feet}$$

$$51' \times 8'-6'' = \underline{433.5 \text{ sq. ft.}}$$

$$\text{P2: } 4' + 2'-6'' + 7'-6'' + 11'-6'' + 11'-6'' + 14' = 51 \text{ lineal feet}$$

$$51' \times 8'-6'' = 433.5 \text{ sq. ft.}$$

$$433.5 \text{ sq. ft.} \times 2 \text{ coats} = \underline{867 \text{ sq. ft.}}$$

$$\text{GBP1: } 4' \times 14' = 56 \text{ sq. ft.}$$

$$11'-6'' \times 7'-6'' = 86.25 \text{ sq. ft.}$$

$$56 \text{ sq. ft.} + 86.25 \text{ sq. ft.} = 142.25 \text{ sq. ft.}$$

$$142.25 \text{ sq. ft.} \times 2 \text{ coats} = \underline{284.5 \text{ sq. ft.}}$$

Bedroom Closet

$$\text{Primer: } 2' + 2' + 7' + 7' = 18 \text{ lineal feet}$$

$$18' \times 8'-6'' = \underline{153 \text{ sq. ft.}}$$

$$\text{P2: } 2' + 2' + 7' + 7' = 18 \text{ lineal feet}$$

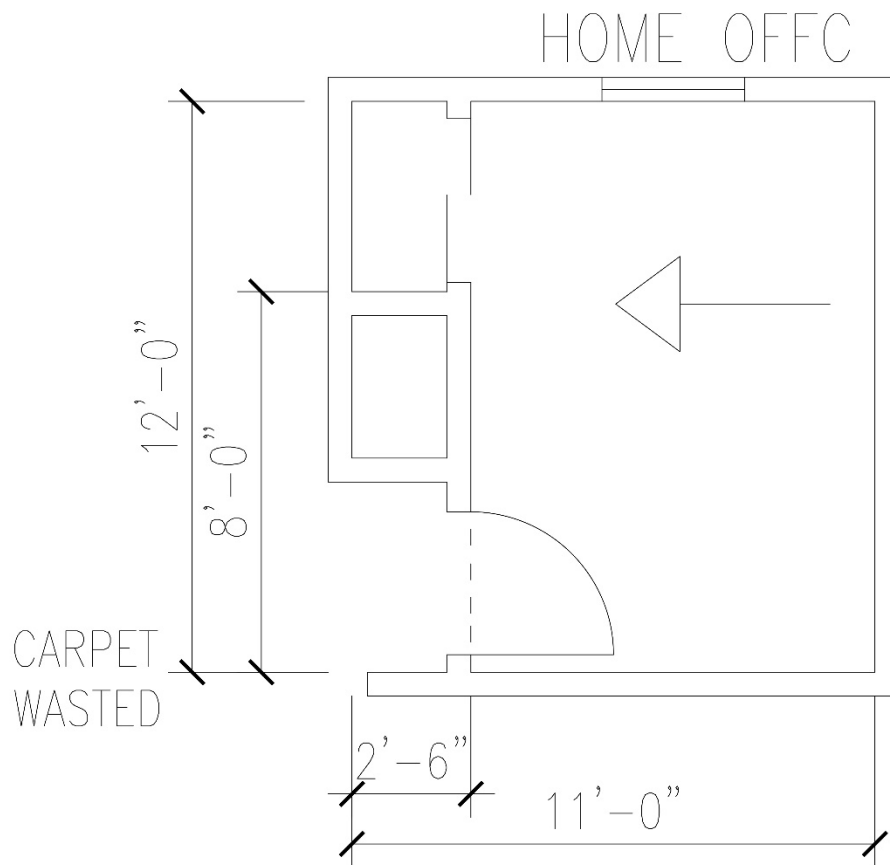
$$18' \times 8'-6'' = 153 \text{ sq. ft.}$$

$$153 \text{ sq. ft.} \times 2 \text{ coats} = \underline{306 \text{ sq. ft.}}$$

$$\text{GBP1: } 2' \times 7' = 14 \text{ sq. ft.}$$

$$14 \text{ sq. ft.} \times 2 \text{ coats} = \underline{28 \text{ sq. ft.}}$$

Office/Closet Flooring



$$11' \times 12' = \underline{132 \text{ sq. ft.}}$$

$$\text{Wasted: } (8' \times 2'-6" = \underline{20'})$$

Office

$$\text{Primer: } 12' + 12' + 8'-6" + 8'-6" = 41 \text{ lineal feet}$$

$$41' \times 8'-6" = \underline{348.5 \text{ sq. ft.}}$$

$$\text{P2: } 12' + 12' + 8'-6" + 8'-6" = 41 \text{ lineal feet}$$

$$41' \times 8'-6" = 348.5 \text{ sq. ft.}$$

$$348.5 \text{ sq. ft.} \times 2 \text{ coats} = \underline{697 \text{ sq. ft.}}$$

$$\text{GBP1: } 12' \times 8'-6" = 102 \text{ sq. ft.}$$

$$102 \text{ sq. ft.} \times 2 \text{ coats} = \underline{204 \text{ sq. ft.}}$$

Office Closet

$$\text{Primer: } 2' + 2' + 4' + 4' = 12 \text{ lineal feet}$$

$$12' \times 8'-6" = \underline{102 \text{ sq. ft.}}$$

$$\text{P2: } 2' + 2' + 4' + 4' = 12 \text{ lineal feet}$$

$$12' \times 8'-6" = 102 \text{ sq. ft.}$$

$$102 \text{ sq. ft.} \times 2 \text{ coats} = \underline{204 \text{ sq. ft.}}$$

$$\text{GBP1: } 2' \times 4' = 8 \text{ sq. ft.}$$

$$8 \text{ sq. ft.} \times 2 \text{ coats} = \underline{16 \text{ sq. ft.}}$$

Sources

Always Active (A) Advantageous (EA588-00154) Carpets Sample. (n.d.). Retrieved December 12, 2019, from [https://shawfloors.com/flooring/carpet/details/always-active-\(a\)-ea588/advantageous](https://shawfloors.com/flooring/carpet/details/always-active-(a)-ea588/advantageous).

River Birch: TAJ Flooring. (n.d.). Retrieved December 12, 2019, from <https://tajflooring.com/collection/select-luxury-vinyl-planks-tiles/river-birch/>.

Style Selections Capri Classic 6-in x 6-in Porcelain Floor Tile (Common: 6-in x 6-in; Actual: 5.8-in x 5.8-in). (n.d.). Retrieved December 12, 2019, from <https://www.lowes.com/pd/Style-Selections-Capri-Classic-6-in-x-6-in-Porcelain-Floor-Tile-Common-6-in-x-6-in-Actual-5-8-in-x-5-8-in/3043892>.

Extreme Bond Primer - Sherwin-Williams. (n.d.). Retrieved December 12, 2019, from <https://www.sherwin-williams.com/homeowners/products/extreme-bond-primer>.

Anti-Formaldehyde Paint. (n.d.). Retrieved December 12, 2019, from <https://www.ecospaints.net/More-Products/Browse-All/Anti-Formaldehyde-Paint#>.

FormWood 2-Ply Hardwood Veneer. (n.d.). Retrieved December 12, 2019, from <https://www.formwood.com/2-ply-hardwood-veneer.html>.

Tb55. (2019, February 24). PREMIUM PLUS® Interior Satin Enamel. Retrieved December 12, 2019, from <https://www.behr.com/consumer/products/interior-paint-and-primer/premium-plus-interior/behr-premium-plus-satin-enamel>.

INDIAN PEARL. (n.d.). Retrieved December 12, 2019, from <https://www.hanstonequartz.com/products/indian-pearl>.

BLACKBURN. (n.d.). Retrieved December 12, 2019, from <https://www.hanstonequartz.com/products/blackburn>.