

Application Exercise #2 (Part 1)

BY: ERIN DUNN

Table of Contents

Title Slide	1	Square Footage	10
Table of Contents.....	2	Brixton Mushroom Tile	11
Wall Tile.....	3	Brixton Bone Tile	12
Quarry Tile.....	4	Prism Ultimate Performance Cement Grout	13
Glazed Floor Tile	5		
Porcelain Tile	6		
Mosaic Tile	7		
Part 2 (Title Page)	8		
Floor Plan	9		

Wall Tile

Description:

Florida Tile

Product: Ainslee Park

Name: Calacatta Gold

Type: Wall Tile

Color Variation: V2

Backing: Dot mounted, mesh mounted

Size: 12.1" x 24.4", 3.75" x 12", 12" x 12", 12" x 24"

Manufacture Contact Info

Florida Tile

Customer Care: 1-800-352-8453

Corporate Information: 859-219-5200



Reference: https://d2bnvhcdai5wl.cloudfront.net/uploads/pdfs/literature/209/original/10023LT%20Ainslee%20Park-HDP%20Lit_web.pdf

Quarry Tile

Description:

Summitville

Product: 33 Falcon

Type: Quarry Tile

Color Variation: V2

Finish: Underglaze

Backing: N/a

Size: 6" x 6" x ½"; 4" x 8" ½"; 8" x 8" x ½"

Manufacture Contact Info

Summitville

Phone: (330) 223-1511

Fax: (330) 223-1414



Reference: <http://summitville.com/quarry-tile-products/quarry-tile>

Glazed Floor Tile

Description:

Marazzi

Product: Livigno

Type: Glazed Floor Tile

Water Absorption: 2% - 5%

Frost Resistant: Yes

Finish: Glaze

Size: 3" x 12"; 12" x 12"; 18" x 18"

Scratch Resistance (MOHS): 2.5

Abrasion Resistance: Class IV

DCOF Wet: Less than or equal to 0.42

Shade Variation: V4

Pre-Consumer Recycled Content: 7%

VOC: none



Manufacture Info

Marazzi

Phone: (972) 232-3801

Email: contact.us@marazzitile.com

Reference: <https://www.marazziusa.com/products/glazed-ceramic/livigno>

Porcelain Tile

Description:

Del Conca

Product: Nat

Number: Bla Group UNI EN 14411_G

Type: Porcelain Tile

Shade Variation: V2

Thickness: 10 mm

Size: 24" x 24"; 12" x 24"; 12" x 12"; 6" x 6"

Manufacture Info

Del Conca

155 Del Conca Way - Loudon,
TN 37774 - USA

Toll: (865) 657-3550

Fax: (865) 657-3554



Reference: <https://www.delconca.com/it/collezioni/del-conca/nat/> (Warning: site is in another language will need to be translated)

Mosaic Tile

Description:

American Olean

Product: Color Appeal

Type: Mosaic Tile

Shade Variation: V4

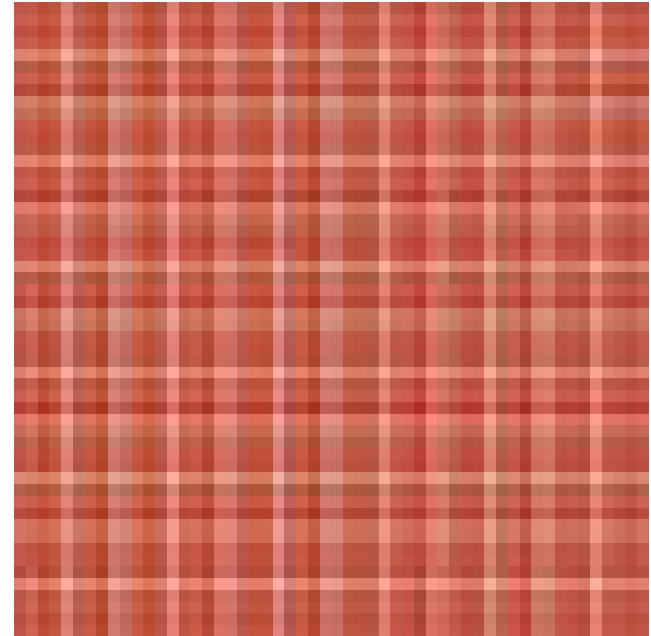
Backing: Mesh mounted

Size: 4" x 12" x 5/16"; 2" x 8" x 5/16"; 3" x 6" x 5/16"; 1" x 1"

Manufacture Info

American Olean

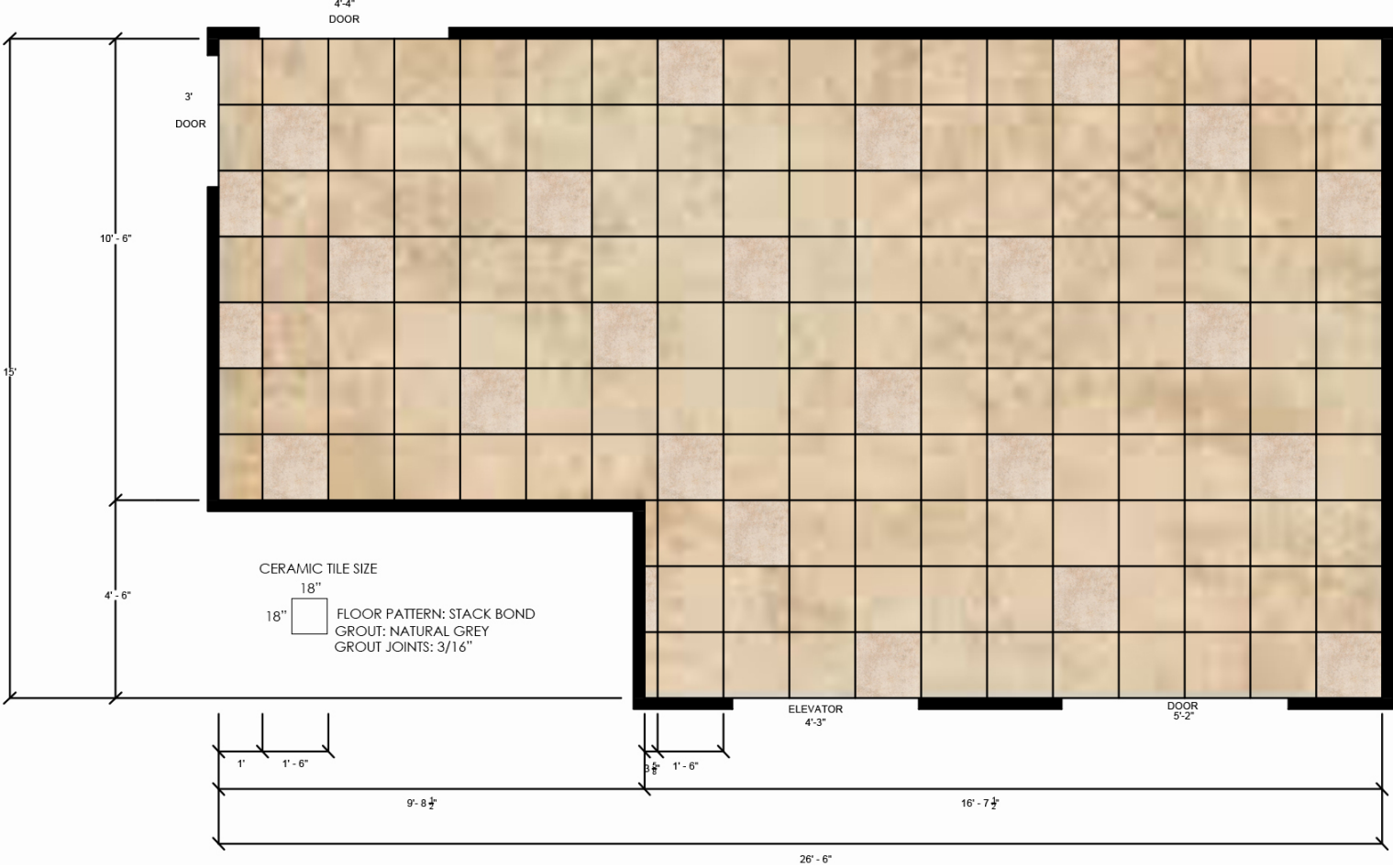
Phone: 888-AOT-TILE



Reference: <https://americanolean.com/series.cfm?series=200>

Part 2

Floor Plan



Square Footage

- 253.85 ft²
- 158 tiles needed in total
- 23 tiles needed for the Brixton Bone tiles
- 135 tiles needed for the Brixton Mushroom tiles

Brixton Mushroom Tile

Shade Variation: V2

Type: Glazed Floor Tile

Size: 18" x 18"

Actual Size: 17 ½" x 17 ½"

Trim: none

Water Absorption: ASTM C373 < 7.0%

Breaking Strength: ASTM C648 > 250 lbs

Scratch Hardness: ASTM MOHS 8.0

Chemical Resistance: ASTM C650 Resistant

Abrasion Resistance: ASTM C1027 4

Reference: <https://www.daltile.com/product/Brixton?size=18%20X%2018&shape=Square&color=Mushroom>



Brixton Bone Tile

Shade Variation: V2

Type: Glazed Floor Tile

Size: 18" x 18"

Actual Size: 17 ½" x 17 ½"

Trim: none

Water Absorption: ASTM C373 < 7.0%

Breaking Strength: ASTM C648 > 250 lbs

Scratch Hardness: ASTM MOHS 8.0

Chemical Resistance: ASTM C650 Resistant

Abrasion Resistance: ASTM C1027 4



Reference:

<https://www.daltile.com/product/Brixton?size=18%20X%2018&shape=Square&color=Bone>

Prism Ultimate Performance Cement Grout

- Joint: 3/16"
- Pot life: 60 – 90 minutes
- Shrinkage: .2%
- Water Absorption: 5%
- Compressive Strength: 3000 psi
- Tensile Strength: 500 psi
- Flexural Strength: 1000 psi
- Color/Number: #9 Natural Gray
- Item Code: PG0917T

Reference:

<https://www.custombuildingproducts.com/products/grout-materials/cement-grout/prism-color-consistent-grout.aspx>

